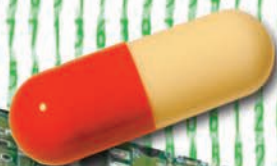


# INVITATION

## WORKSHOP MATHEMATICAL MODELING

A POWERFUL TOOL FOR  
ANTI CANCER DRUG  
DEVELOPMENT



**APRIL 12, 2013**  
**HOTEL RADISSON**  
**LYON, FRANCE**

### SCIENTIFIC COMMITTEE :

Benoit YOU (Hospices Civils de Lyon, Lyon, France)

Vincent CALVEZ (ENS, Lyon, France)

Emilie HENIN (Université Claude Bernard Lyon 1, Lyon, France)

Christophe MEILLE (Hoffmann-La Roche, Basel, Switzerland)

Benjamin RIBBA (INRIA, Grenoble, France)

Michel TOD (Université Claude Bernard Lyon 1, Lyon, France)



# PROGRAM

8 :30

## Registration, Welcome

9:00-10:00

### Introduction and présentation of challenges

#### Issues raised by biological and clinical scientists about drug development.

*Benoit YOU (Hospices Civils de Lyon, Lyon, France)*

*Jean-Yves BLAY (Centre Léon Bérard, Lyon, France)*

*Gilles FREYER (Hospices Civils de Lyon, Lyon, France)*

*Stéphane GIRAUD (Centre Léon Bérard, Lyon, France)*

*Nicolas ISAMBERT (Centre Georges François Leclerc, Dijon, France)*

*Charles DUMONTET (Université Claude Bernard, Lyon I, France)*

*René BRUNO (Pharsight Corporation, Marseille, France)*

10:00-10:45

### Overview of model-based drug development

*René BRUNO (Pharsight Corporation, Marseille, France)*

*Michel TOD (Université Claude Bernard, Lyon I, France)*

10:45-11:00

## Coffee Break

11:00-12:30

### From preclinical to clinical settings: translational approaches

*Christophe MELLE (Hoffman-La Roche, Basel, Switzerland)*

*Antje WALZ (Hoffmann-La Roche, Basel, Switzerland)*

*Jean Yves BLAY (Centre Léon Bérard, Lyon, France)*

12:30-13:30

## Discussion and Lunch

13:30-15:00

### Modeling of system biology

*Emilie HENIN (Université Claude Bernard, Lyon I, France)*

*Ben Filippo KRIPPENDORFF (Hoffmann-La Roche, Basel, Switzerland)*

*Paolo UBEZIO (Mario Negri Institute, Milano, Italy)*

*Pierre GABRIEL (Université de Versailles-Saint-Quentin-en-Yvelines, France)*

15:00-15:30

## Coffee Break

15:30-16:45

### Relationships between tumor dynamics and clinical benefits

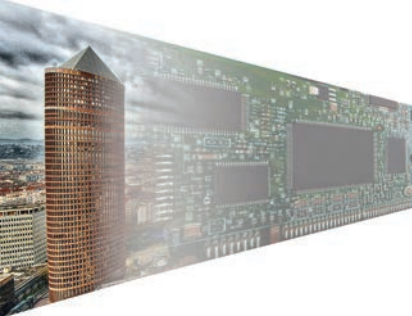
*Benjamin RIBBA (INRIA, Grenoble, France)*

*Alwin HUITEMA (The Netherlands Cancer Institute/Slotervaart Hospital, Amsterdam, The Netherlands)*

*Xavier PAOLETTI (Institut Curie, Paris, France)*

16:45-17:00

## Closing remarks



## GENERAL INFORMATION

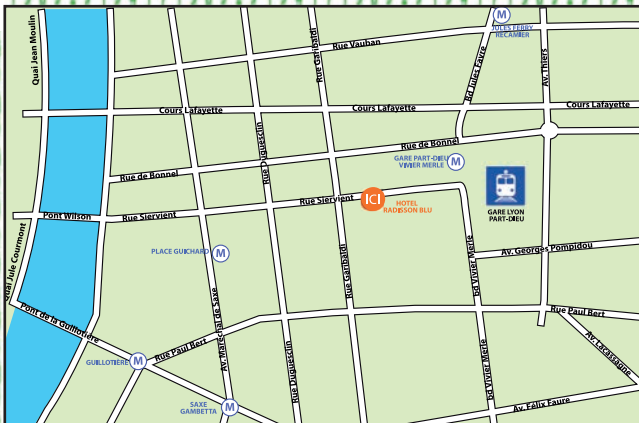
Access map

**Date:** on Friday 12, April 2013

**Place:**  
Hotel RADISSON BLU  
Level 32  
129 rue Servient  
69006 LYON  
Phone: +33 (0)4 78 63 55 00

**General organization  
and information:**  
**MCO Congres - Nataly REVEL**

37, rue Tronchet  
69009 Lyon - France  
Tél. +33 (0)4 37 44 12 90  
Fax. +33 (0)4 78 68 84 42



You are sincerely invited to participate at the workshop  
**MATHEMATICAL MODELING**  
a Powerful Tool for Anti Cancer Drug Development

Could you please return this form  
to MCO Congres - Nataly REVEL  
by e-mail : [nataly.revel@mcocongres.com](mailto:nataly.revel@mcocongres.com)  
or by fax : +33 (0)4 78 68 84 42

Surname: ..... Name: .....  
Address: .....  
Postcode: ..... City: ..... Country: .....  
Specialty: .....  
Email: .....  
Phone: ..... Cellular phone: .....

- I wish to participate to the Workshop :  
"Mathematical Modeling: a Powerful Tool for Anti cancer Drug Development"  
 I won't participate

No registration fees. The confirmation is mandatory. Limited to 40 places.



